

Role of local engineers in erection of biodiesel plants in Slovenia

Miha Novak Kač, BSEE
Technical director
Genera d.o.o.

Company vision

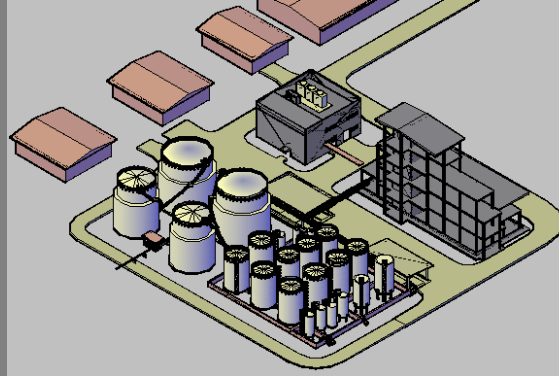
The vision of Genera d.o.o. is to become the leading Slovene enterprise for total technical solutions in the fields of energy and ecology and to make a successful breakthrough onto foreign markets as well.

We turn other companies' problems into our references by providing solutions that make difference.

With our wide selection of experts from different fields of expertise Genera provides our partners solutions from start to finish of the project.

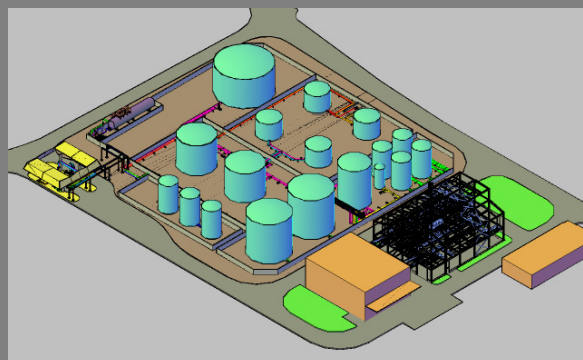
On-going projects - two biodiesel plants

- Basic Design (IDZ)
- Acquirement design conditions/terms from consent authorities (projektni pogoji)
- Documentation for permit to build (PGD)



On-going projects - two biodiesel plants;

- Acquirement authority consent statements (soglasja)
- Acquirement of permit to build
- Detail design (PZI)
- Project erection
- As built design (PID)



Challenges

- Gaining trust from suppliers of technology. We do not want to compete with them and assure them all our partners total confidentiality.
- Reconciliation with supplier of technology on what is needed at each design phase according to Slovene legislation. Especially critical are basic design and documentation for building permit.

Challenges

- Adjusting time schedule with investors and suppliers of technology
- Acquirement authority consent statements. Critical is consent from Ministry of the Environment and Spatial Planning (water, environment and nature agency)

Team

Leading engineers from each field are minimum requirement:

- Leading engineer for Mechanical engineering
- Leading engineer for Electrical engineering
- Leading engineer for Civil constructions
- Leading engineer for Architecture
- Leading engineer for Technology
- Experts for environmental studies, underground water contamination
- Experts for geomechanical research
- Experts for fire protection
- Experts for hazardous areas

After the design phase

Genera plans involvement as an engineer on the side of Investor:

- Evaluation of quotations from contractors
- Contract proposals
- Elimination of "gray areas"
- Project coordination; financial, expert engineering, coordination of supply and delivery of equipment
- Coordination of test runs, takeovers
- Acquisition of permit for operation
- Maintenance (in development)

Conclusion

Investors in Slovenia have chosen Technology Suppliers from abroad, who have modern technology and numerous references.

Despite of this Investors need local partners/engineers for:

- designing auxiliary objects and equipment,
- local licenses, translation and nostrification,
- knowledge of local regulations and requirements,
- project coordinators for the erection phase.

It is vital to form an experienced team of engineers from various fields of expertise.

Total technical solutions in energetics and ecology

Suppliers go, local partners stay

Thank you for your attention.